



27 Blue Anchor Lane, London, SE16 3UL

*** AVAILBLE FOR 3 INDIVIDUALS / HMO APPROVED ***

A spacious three bedroom, recently refurbished, modern apartment; boasting two private balconies with views of central London as well as being walking distance from Bermondsey Underground station. The apartment features an open plan modern kitchen, reception and dining room with plenty of natural light and access to a generous private balcony, three double bedrooms all with built-in storage and one having access to the second balcony, and a stylish family bathroom. Additional storage can be found in the hallway. The property is surrounded by many local amenities such as markets, cafes, restaurants, convenience stores, supermarket, as well as the greenery of Southwark Park. The apartment also has excellent transport links providing access across London.

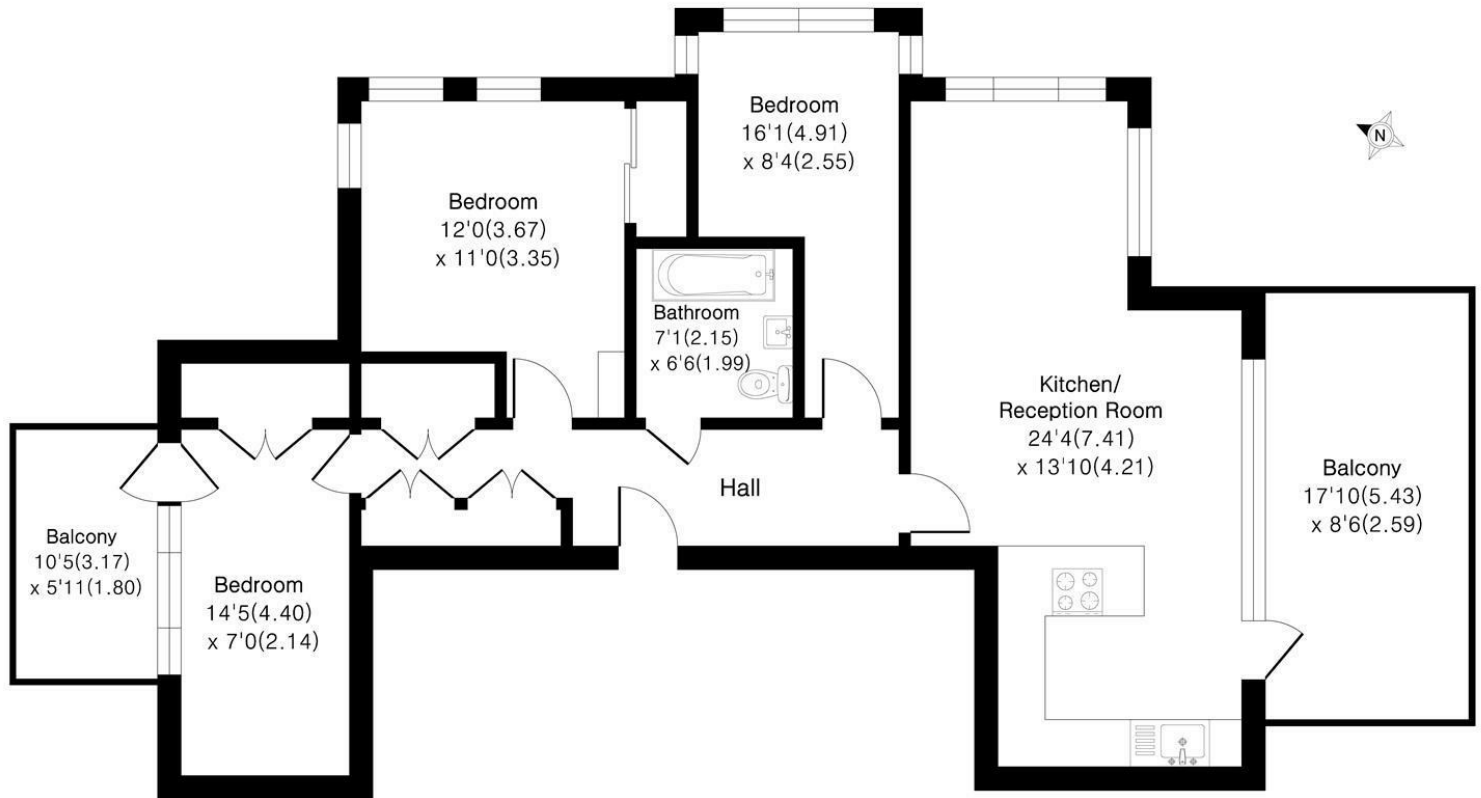
- Recently Refurbished Penthouse Apartment
- Three Double Bedrooms
- Two Private Balconies with Views of the London Skyline
- AVAILABLE FOR 3 INDIVIDUALS / HMO APPROVED
- Excellent Transport Links
- Great Location

Alex & Matteo
ESTATE AGENTS

£3,400 Per month

Blue Anchor Lane SE16

Approximate Area = 883 sq ft / 82.0 sq m



6th Floor

Floor plan Produced in accordance with RICS Property Measurement 2nd Edition.
Incorporating International Property Measurement Standards (IPMS2 Residential).
Produced for Alex & Matteo Estate Agents.

Energy Efficiency Rating		
	Current	Potential
Very energy efficient - lower running costs		
(92 plus) A		
(81-91) B	83	83
(69-80) C		
(55-68) D		
(39-54) E		
(21-38) F		
(1-20) G		
Not energy efficient - higher running costs		
England & Wales <small>EU Directive 2002/91/EC</small>		